

POM_08 - [10% Budget Cut - Data]

File Edit View Tools Window Help

Properties Alternative Status Criterion Weights Alternative Scores Pre-FOC Scores Synergy Scores Costs Budget Schedule

Relationships Multipliers

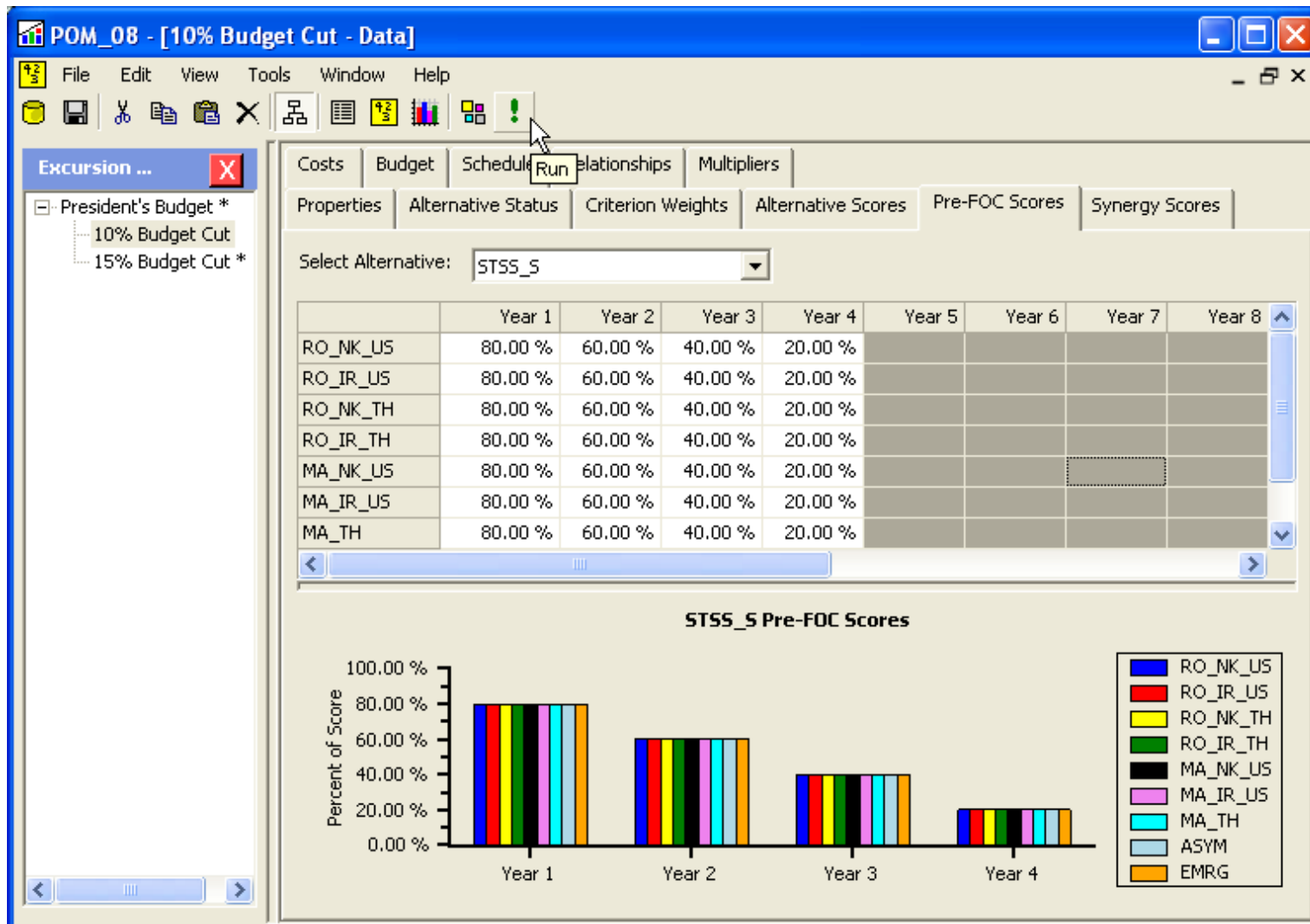
Add Relationship Delete Relationship

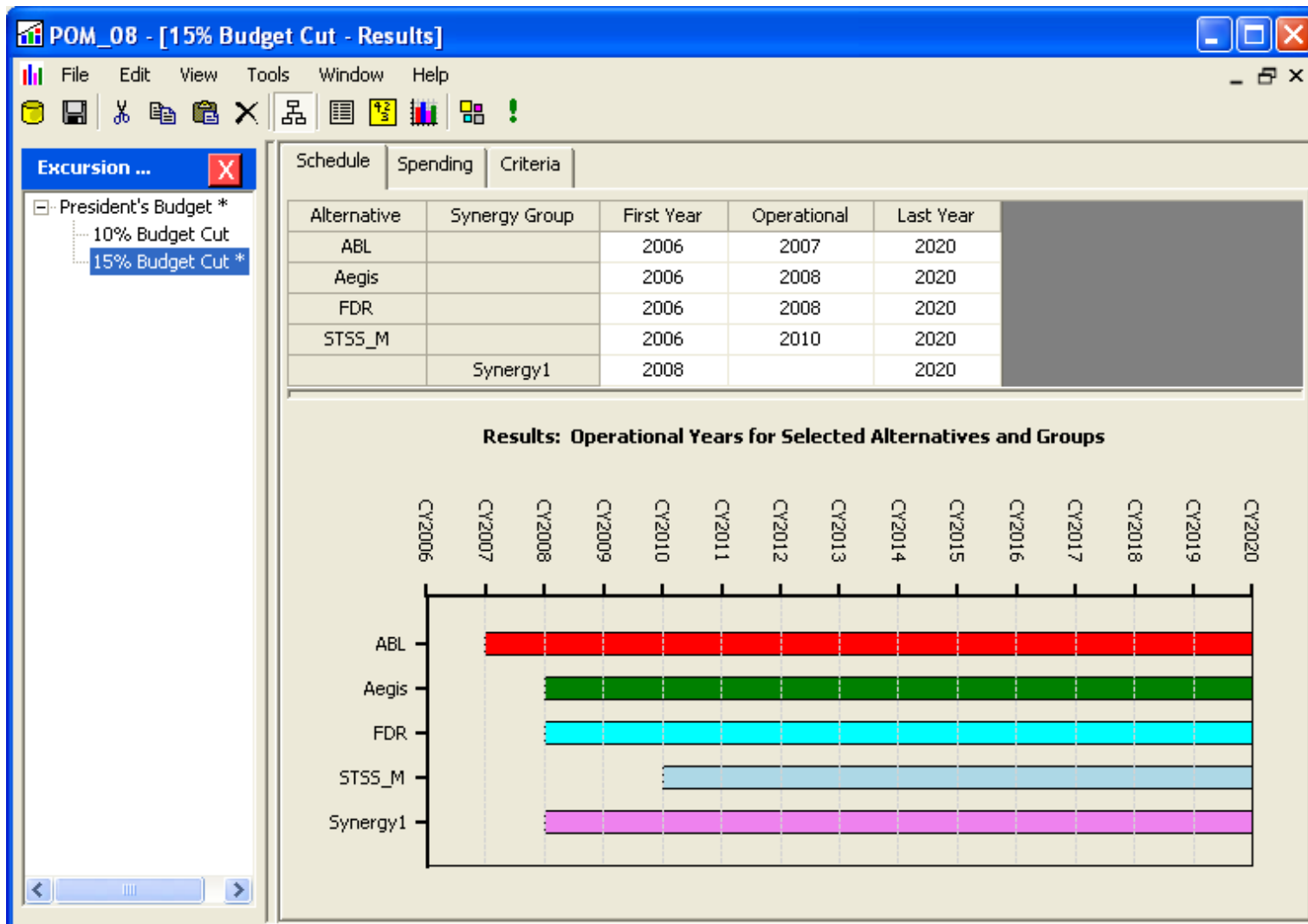
Relationship Summary

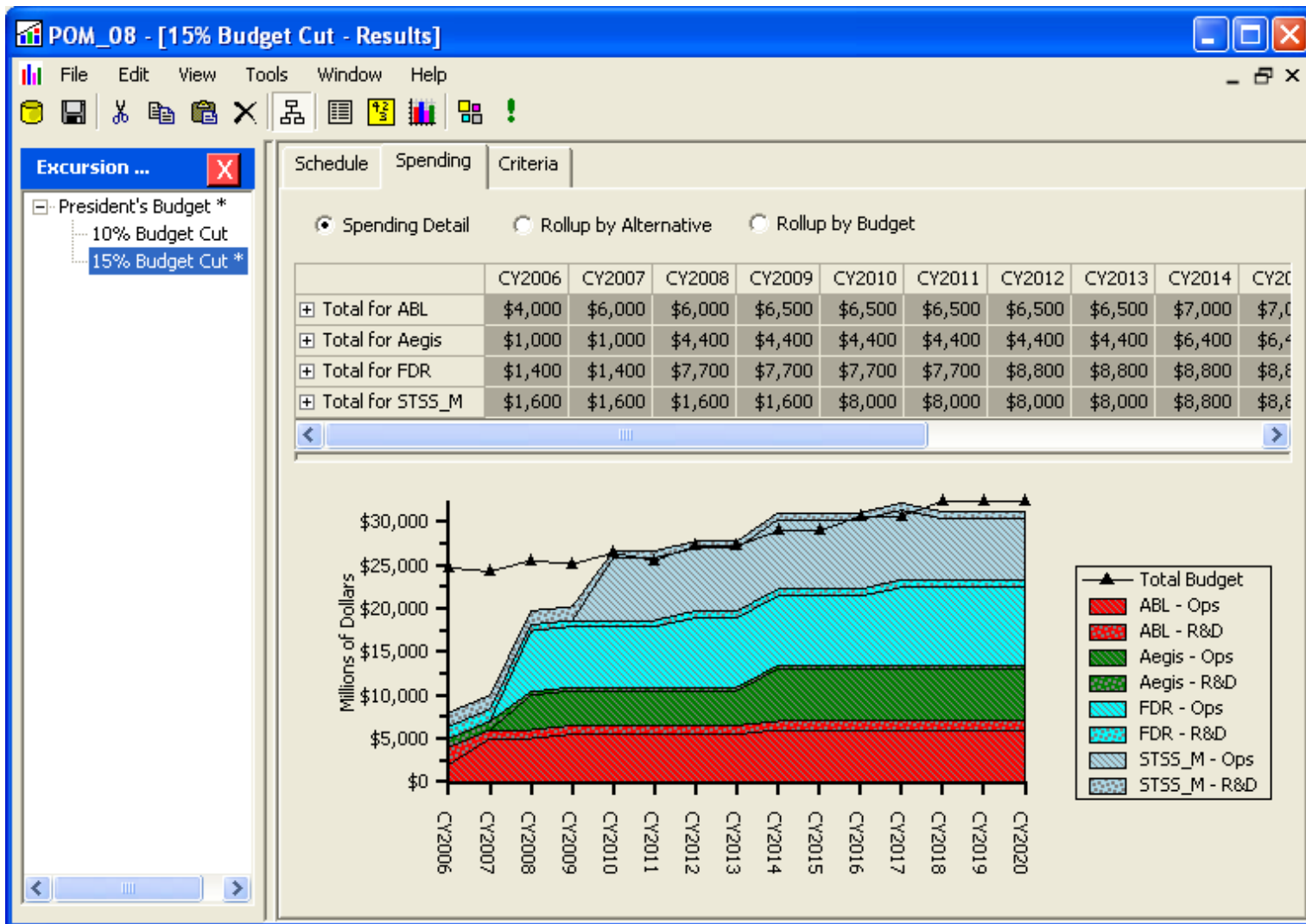
- ABL and FBR are not allowed to have overlapping operational years.
- ONIR can only be selected if ABL is selected.
- ONIR must become operational the same year ABL ends if ONIR is to be chosen.
- ONIR can be selected only if two of the alternatives in Synergy1 are selected.
- FBR and STSS_5 must be operational the exact same years in order for either one to become operational.
- In order for ONIR to become operational, ABL must be in operation on or before the first year of operation for ONIR.
- ABL must be in operation each year ONIR is operational. ABL years can be greater than ONIR years, but not the other way around.
- Exactly 2 member(s) of the Synergy1 group must be selected.
- If ONIR is selected, then at least one member of the Synergy1 group must also be selected.
- ONIR must start operations the year ABL stops, if both alternatives are bought.
- ONIR can be bought if ABL is bought, but only if the operational years of the two alternatives exactly match.
- If ABL is bought, then ONIR can be bought; its start year must be 2 years after the start year of ABL.
- At most, only 2 alternatives from the Synergy2 group can be selected.

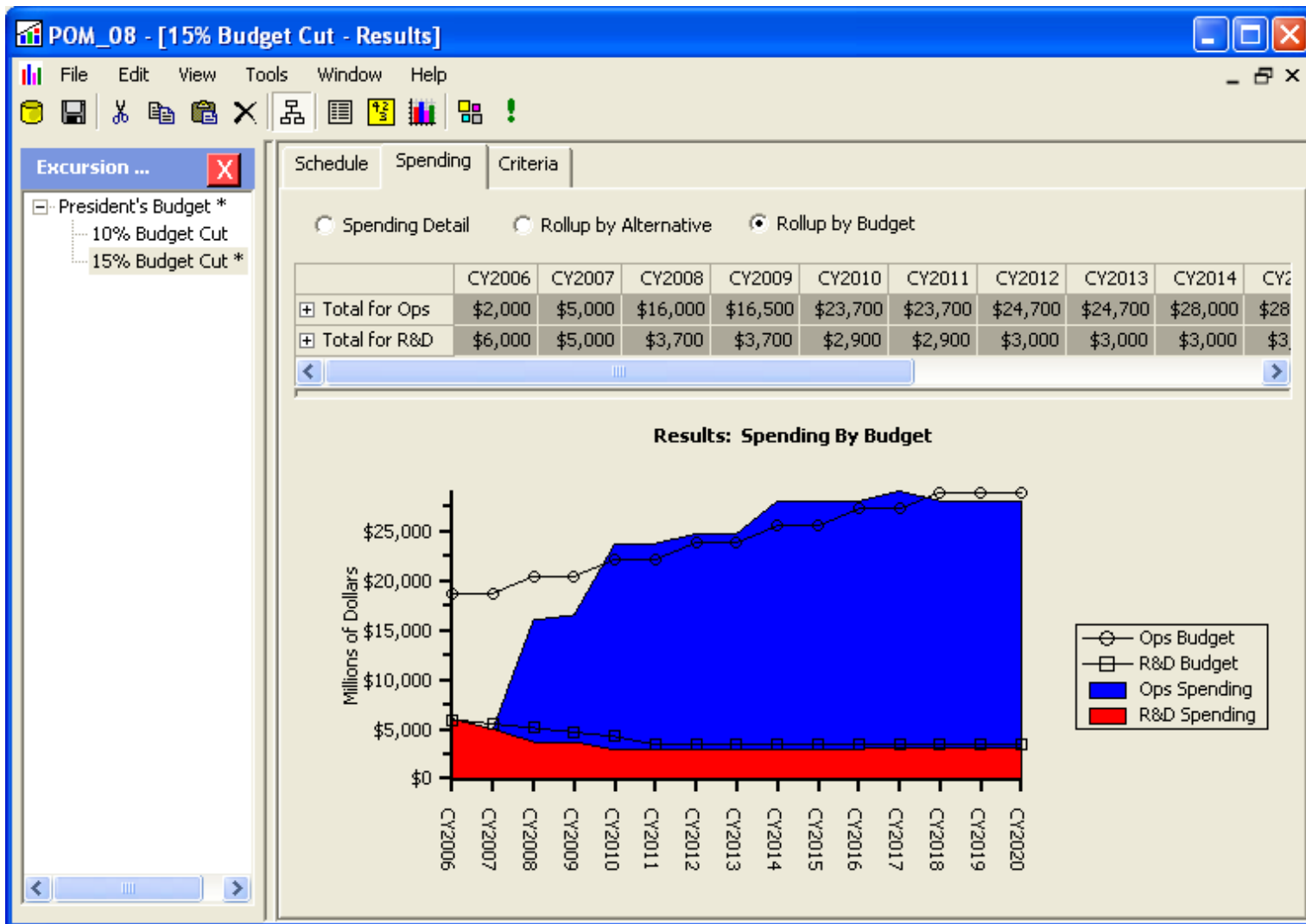
Relationship	Follow On
Dependent	ONIR
Primary	ABL
Comment	
Description	The dependent alternative must become operational the same year the primary alternative ends if the dependent alternative is to be chosen.

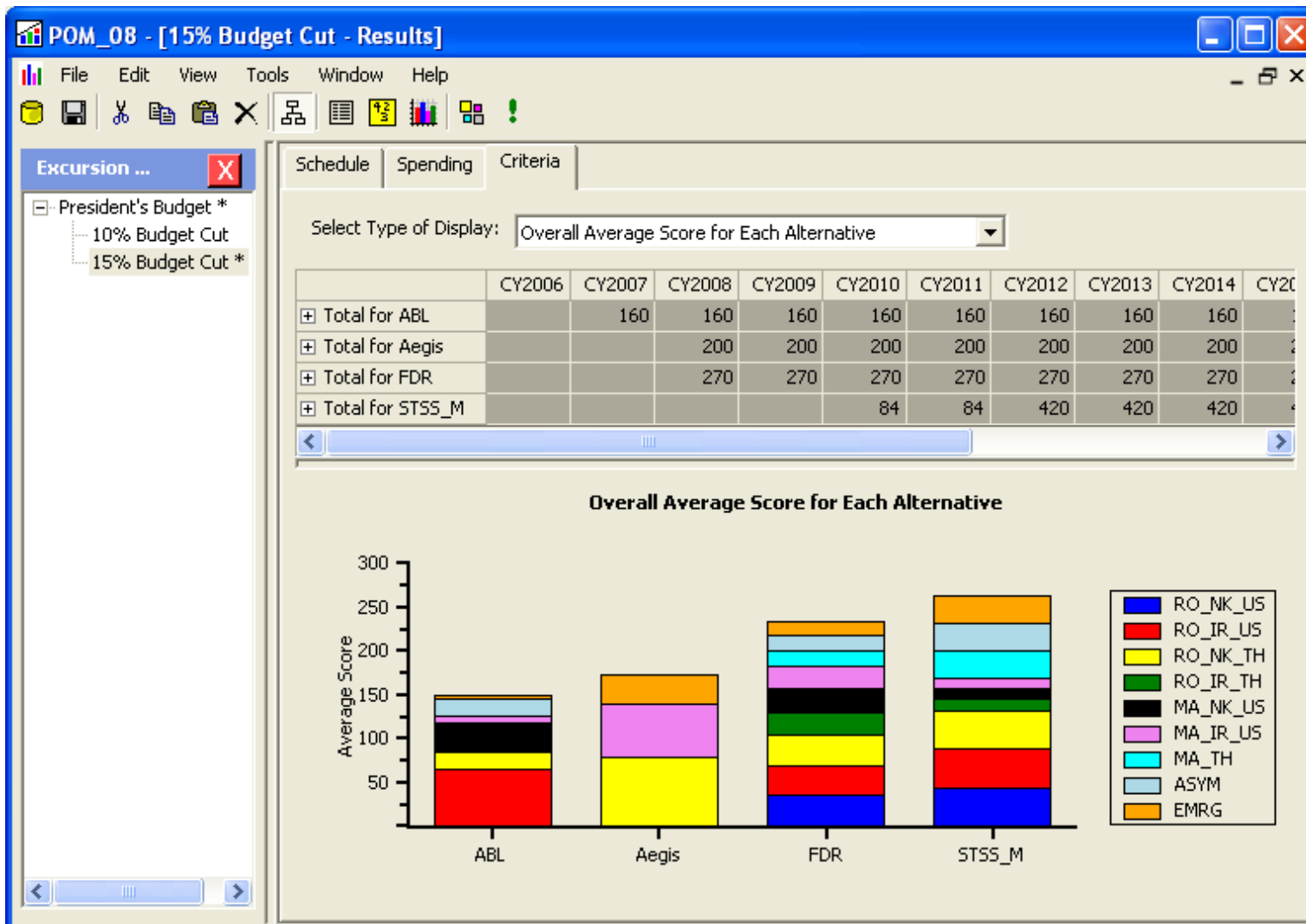
Update Reset

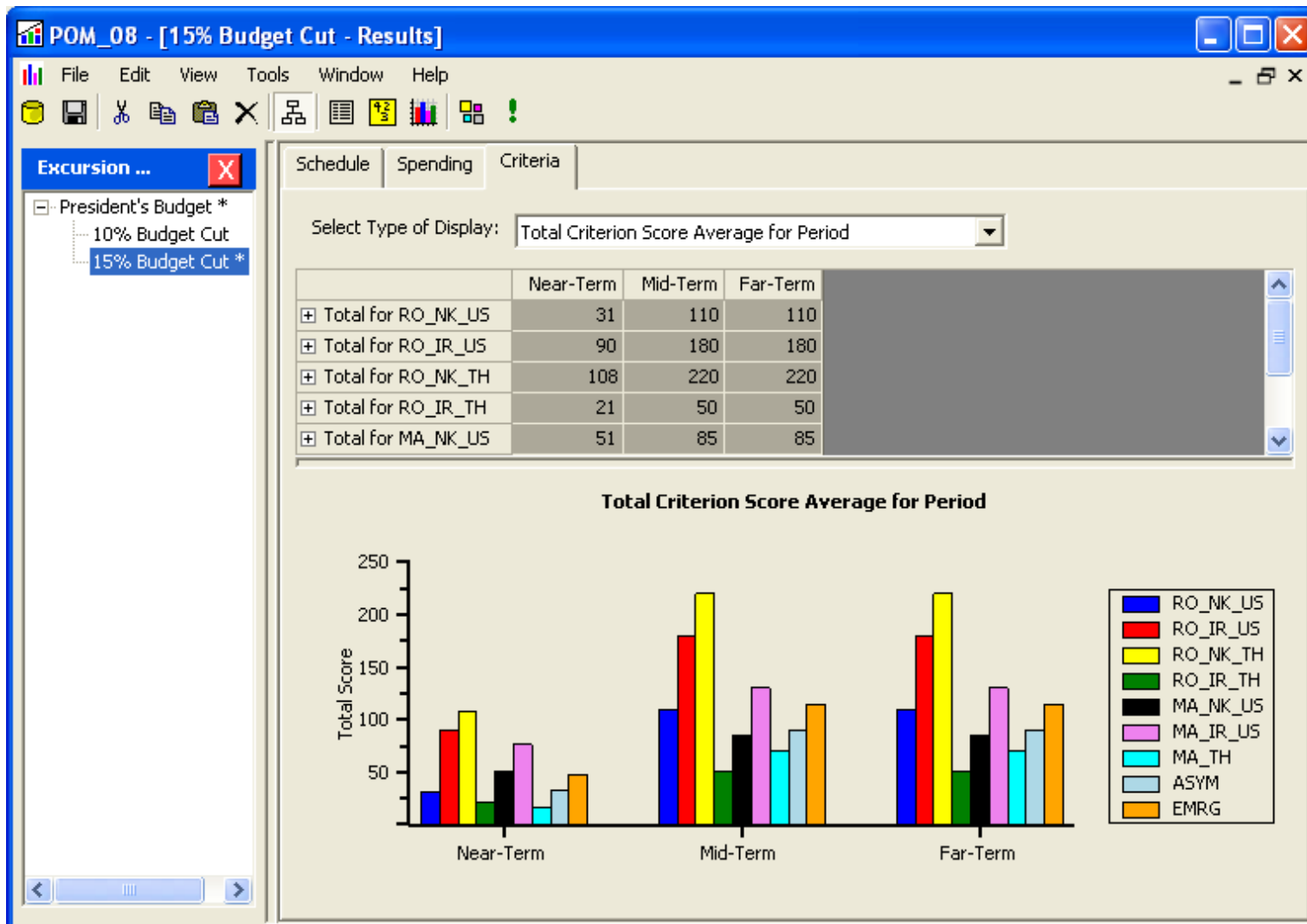


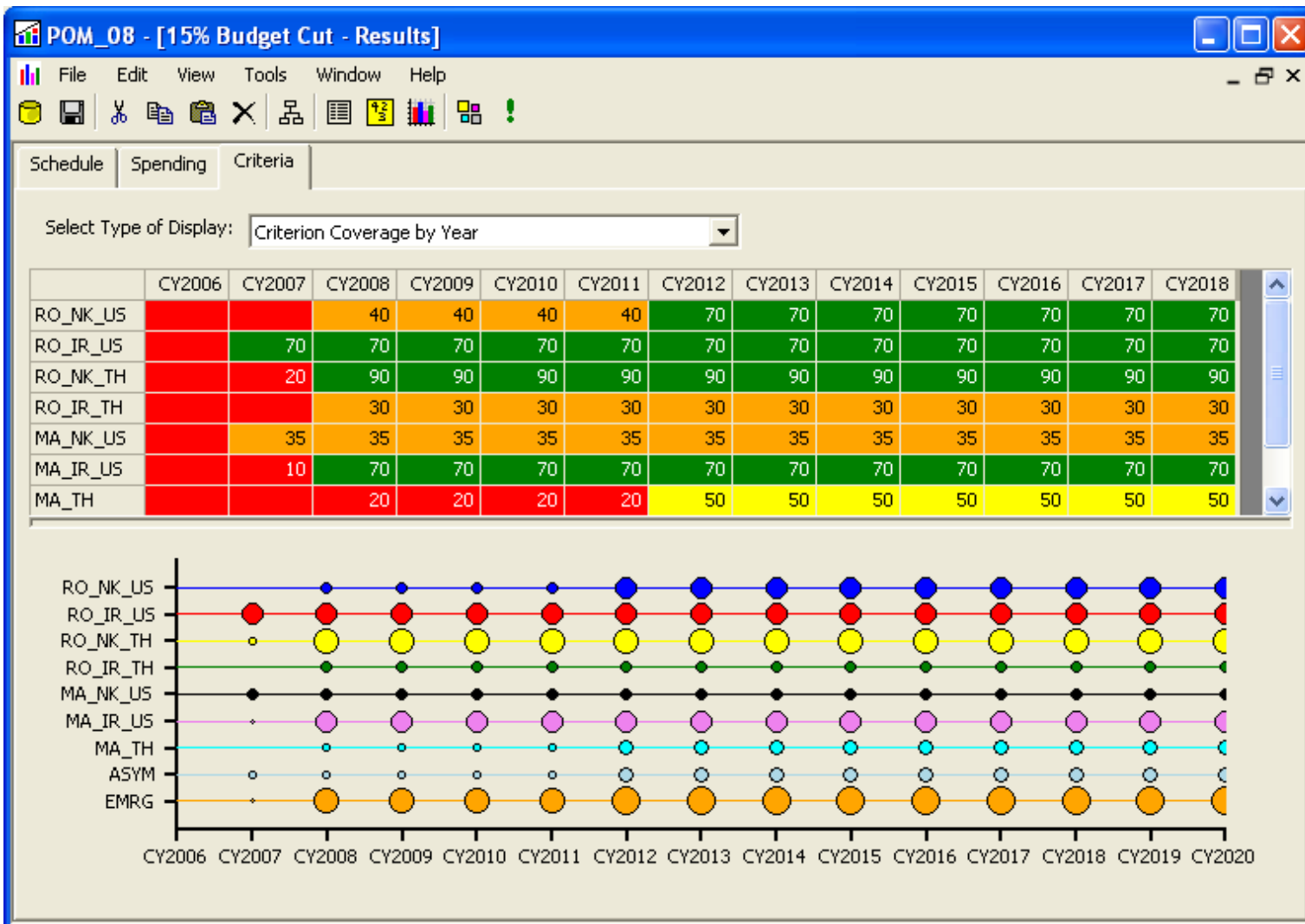


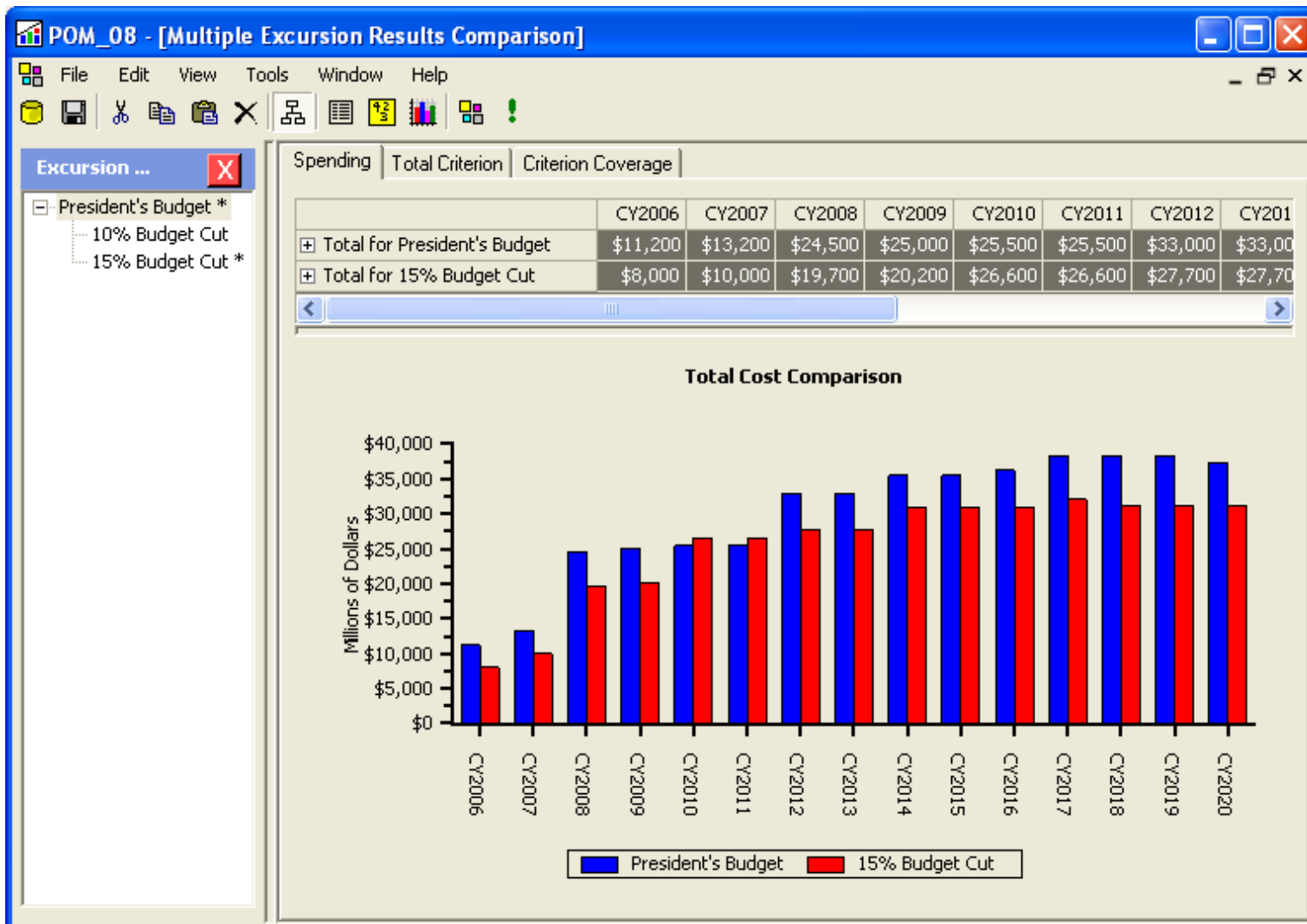


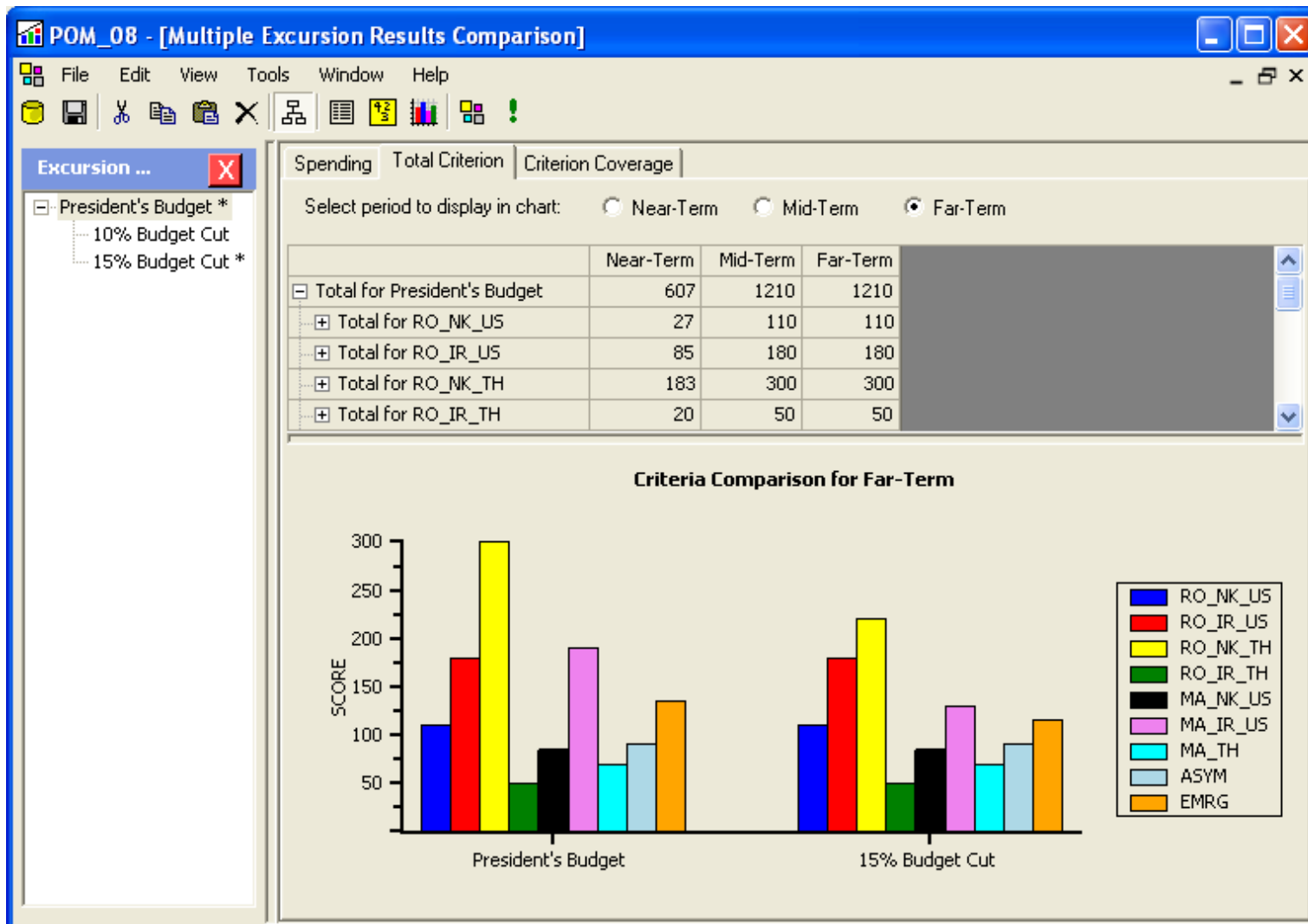












POM_08 - [Multiple Excursion Results Comparison]

File Edit View Tools Window Help

Excursion ...

- President's Budget *
- 10% Budget Cut
- 15% Budget Cut *

	CY2006	CY2007	CY2008	CY2009	CY2010	CY2011	CY2012	CY2013	CY2014
Total for President's Budget	160	285	465	465	465	465	565	565	565
RO_NK_US			40	40	40	40	70	70	70
RO_IR_US		70	70	70	70	70	70	70	70
RO_NK_TH	80	80	90	90	90	90	90	90	90
RO_IR_TH			30	30	30	30	30	30	30
MA_NK_US		35	35	35	35	35	35	35	35
MA_IR_US	60	60	70	70	70	70	70	70	70
MA_TH			20	20	20	20	50	50	50
ASYM		20	20	20	20	20	50	50	50
EMRG	20	20	90	90	90	90	100	100	100
Total for 15% Budget Cut	0	160	465	465	465	465	565	565	565
RO_NK_US			40	40	40	40	70	70	70
RO_IR_US		70	70	70	70	70	70	70	70
RO_NK_TH		20	90	90	90	90	90	90	90
RO_IR_TH			30	30	30	30	30	30	30
MA_NK_US		35	35	35	35	35	35	35	35
MA_IR_US		10	70	70	70	70	70	70	70
MA_TH			20	20	20	20	50	50	50
ASYM		20	20	20	20	20	50	50	50
EMRG		5	90	90	90	90	100	100	100